



4 LAMP CHANNELS (Series CH-4) 2', 3', 4', 6' & 8'



Designed for Coves, Garages, Storage & Utility Areas, Workshops



Options:

Emergency Ballast
Dimming Ballast
Wire Guards
Alignment Clips
Plug & Cords
Switches
V Hooks
S Hooks
Jack Chain
Plastic Sleeves

Features:

- **Heavy-duty** construction.
- **Reflectors** are roll formed for consistent alignment and rigidity.
- **Asymmetric**, half or full reflector available in white or specular aluminum.
- **Continuous** raceway and row-mounting capability.
- **Various Mounting** alternatives including Chain, S hooks or V hooks.

We carry replacement parts for all the fixtures we manufacture

E. B. LIGHTING & SUPPLIES, INC.

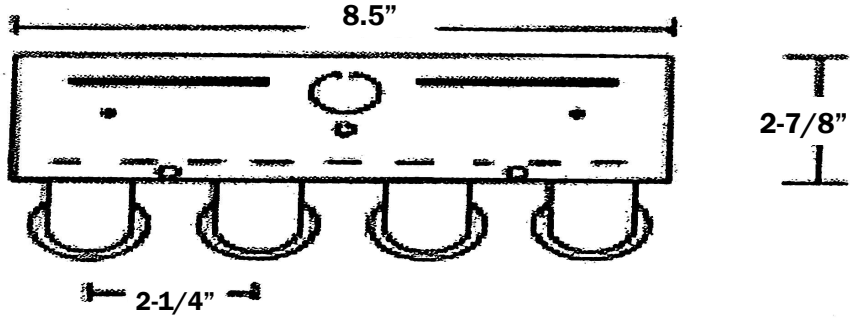
1107 East Baltimore St., Baltimore MD 21202

410-276-7617

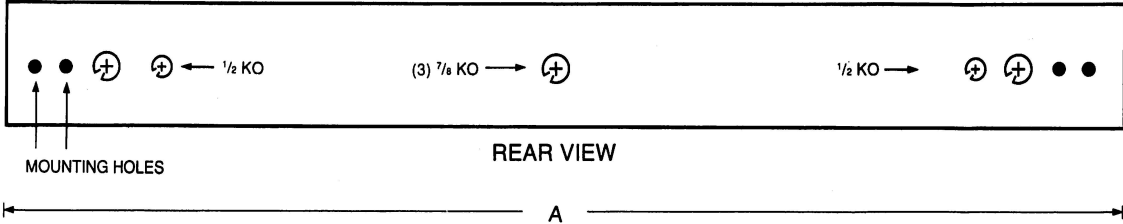
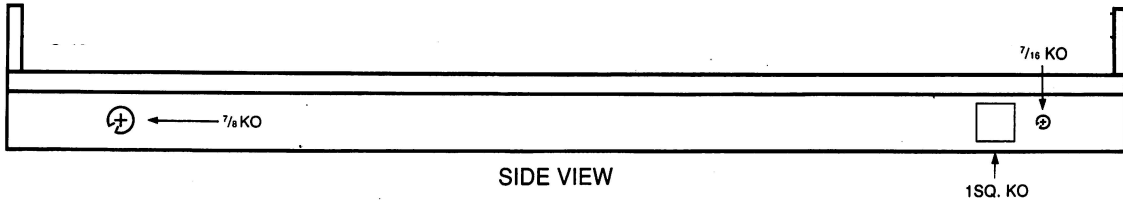
fax: 410-276-7307

FOUR LIGHT CHANNEL DIMENSIONS

"A" LENGTHS
24"
36"
48"
72"
96"



Dimensions May Vary



BALLAST & LAMP DESCRIPTION:

CH	# LAMPS	WATTS & LAMPS	VOLTAGE	OPTIONS
□ / □ / □ / □	4	17, 25, 32, 59 — T8 14, 24, 28 & 54 — T5 20, 30, 40 — T12 72, 96 — T12	120 277 C-UNIV. 120-277	DIM- DIMMING BALLAST 2BAL- 2 BALLAST EMG- EMERGENCY BALLAST ISN - HIGH EFFICIENCY / NORM ISH - HIGH EFFICIENCY / HIGH ISL - HIGH EFFICIENCY / LOW C/O - CONVEIENCE OUTLET

ADD "T" FOR TANDEM



E.B. LIGHTING & SUPPLIES, INC.
 1107 East Baltimore Street
 Baltimore MD 21202
 410-276-7617 fax: 410-276-7307