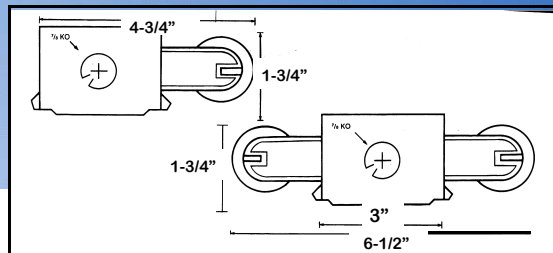
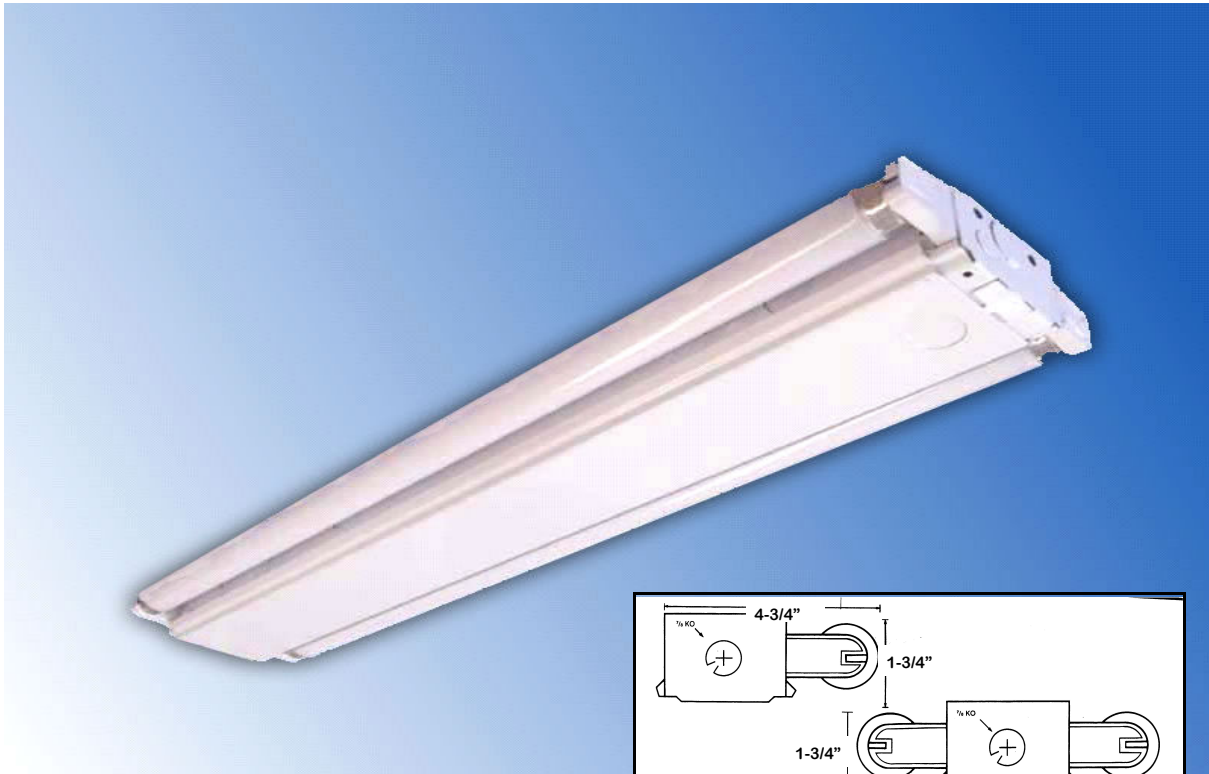




## CHANNEL SIDE-CUT (Series SC) 2', 3', 4', 5' FIXTURES



*Designed for Retail Stores, Stairwells, Warehouse, Coves, Valances, Displays*



### **Options:**

Plug & Cords  
Pull Chain Switches  
Lamp Locks

### **Features:**

- **All Purpose** side-mount strip that can be adapted to be a single light or double strip.
- **Die-formed** cold rolled steel.
- **Baked White** enamel with 85% reflectivity.
- **Designed** for surface, chain and stem hanging.
- **Install** as individual units or in continuous rows.

**We carry replacement parts for all the fixtures we manufacture**

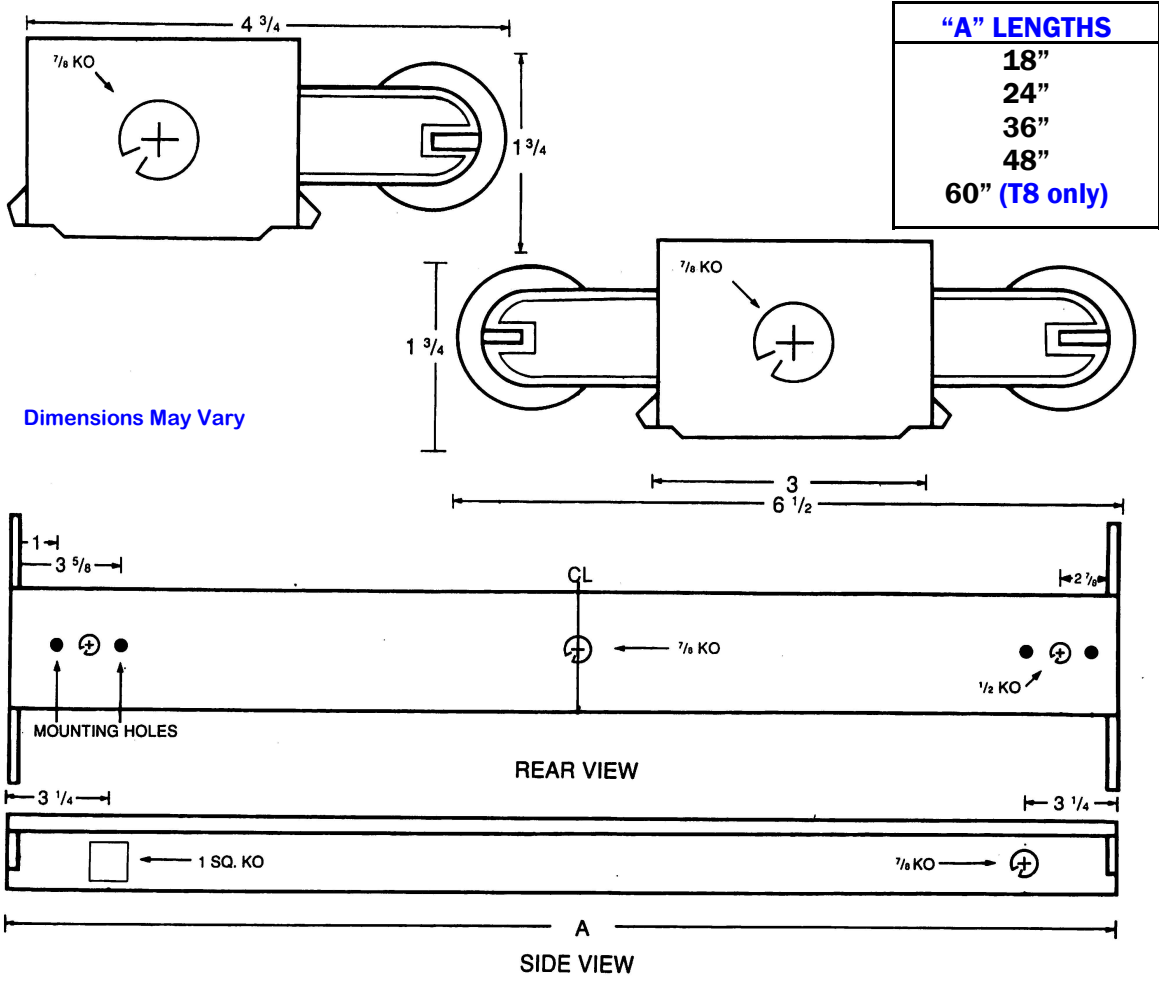
**E. B. LIGHTING & SUPPLIES, INC.**

1107 East Baltimore St., Baltimore MD 21202

410-276-7617

fax: 410-276-7307

# SIDE CUT STRIP DIMENSIONS



"A" LENGTHS	
18"	
24"	
36"	
48"	
60"	(T8 only)

Dimensions May Vary

### BALLAST & LAMP DESCRIPTION:

SC	# LAMPS	WATTS & LAMPS	VOLTAGE	OPTIONS
□ / □ / □ / □	1	17, 25, 32 — T8	120	DIM- DIMMING BALLAST EMG- EMERGENCY BALLAST ISN - HIGH EFFICIENCY / NORM ISH - HIGH EFFICIENCY / HIGH ISL - HIGH EFFICIENCY / LOW
	2	14, 28 & 54 — T5 15, 20, 30, 40 — T12	277 C-UNIV. 120-277	

**ALSO AVAILABLE ON 5' BODY with T8 LAMPS**

NOT ALL SIZES AVAILABLE WITH ALL OPTIONS



**E.B. LIGHTING & SUPPLIES, INC.**  
 1107 East Baltimore Street  
 Baltimore MD 21202  
 410-276-7617      fax: 410-276-7307