



## INDUSTRIAL HIGH OUTPUT(HOI) HIGH OUTPUT 2 or 4 LIGHT



*Designed for Factories, Warehouses, Workshops, Garages & Utility Areas*



SELECT FROM:  
2', 4', 6' & 8'

SELECT FROM:  
T5, T8 or T12

### Options:

Emergency Ballasts  
Slotted Reflectors  
Wire Guards  
Alignment Clips  
Plug and Cords  
Pull Chain Switches  
S Hooks  
V Hooks  
Jack Chain

### Features:

- **Housing** is heavy 23 gauge prime cold rolled steel.
- **Pre-painted** high-reflectance white housing.
- **Reflectors** are white roll formed for consistent alignment and rigidity.
- **Mounting** holes are provided for surface, chain, stem-mounted, V Hangers or air-craft cable.
- **Versatile End -Plates** doubles as coupler for continuous mounting.
- **Completely** wired and ready to hang.
- **Available** in T5, T8, T12 (*but not all lengths*)

**We carry replacement parts for all the fixtures we manufacture**

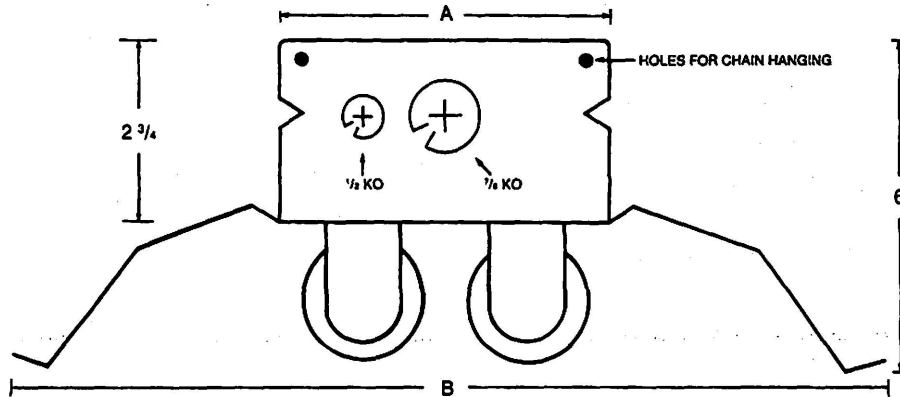
**E. B. LIGHTING & SUPPLIES, INC.**

1107 East Baltimore St., Baltimore MD 21202

410-276-7617

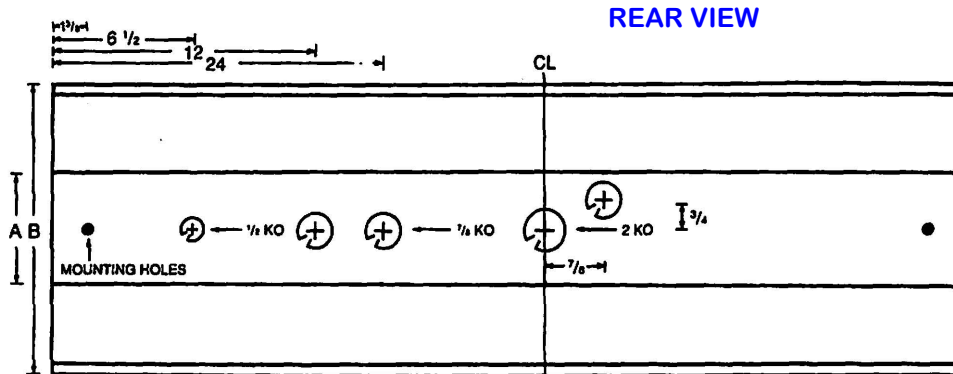
fax: 410-276-7307

# INDUSTRIAL HIGH OUTPUT DIMENSIONS



Dimensions May Vary

Fixture	A	B
2/L	5"	13"
4/L	8 5/8"	16 1/2"



### BALLAST & LAMP DESCRIPTION

HOI	# LAMPS	WATTS & LAMPS	VOLTAGE	OPTIONS
□ / □	2	48 & 86 — T8	120	DIM- DIMMING BALLAST
□ / □	4	24 & 54 — T5	277	EMG- EMERGENCY BALLAST
□ / □		48, 72, 96 — T12	C-UNIV. 120-277	ISN - HIGH EFFICIENCY / NORMAL POWER
				ISH - HIGH EFFICIENCY / HIGH POWER
				ISL - HIGH EFFICIENCY / LOW POWER

ADD "T" FOR TANDEM



## E.B. LIGHTING & SUPPLIES, INC.

1107 East Baltimore Street  
Baltimore MD 21202

410-276-7617

fax: 410-276-7307