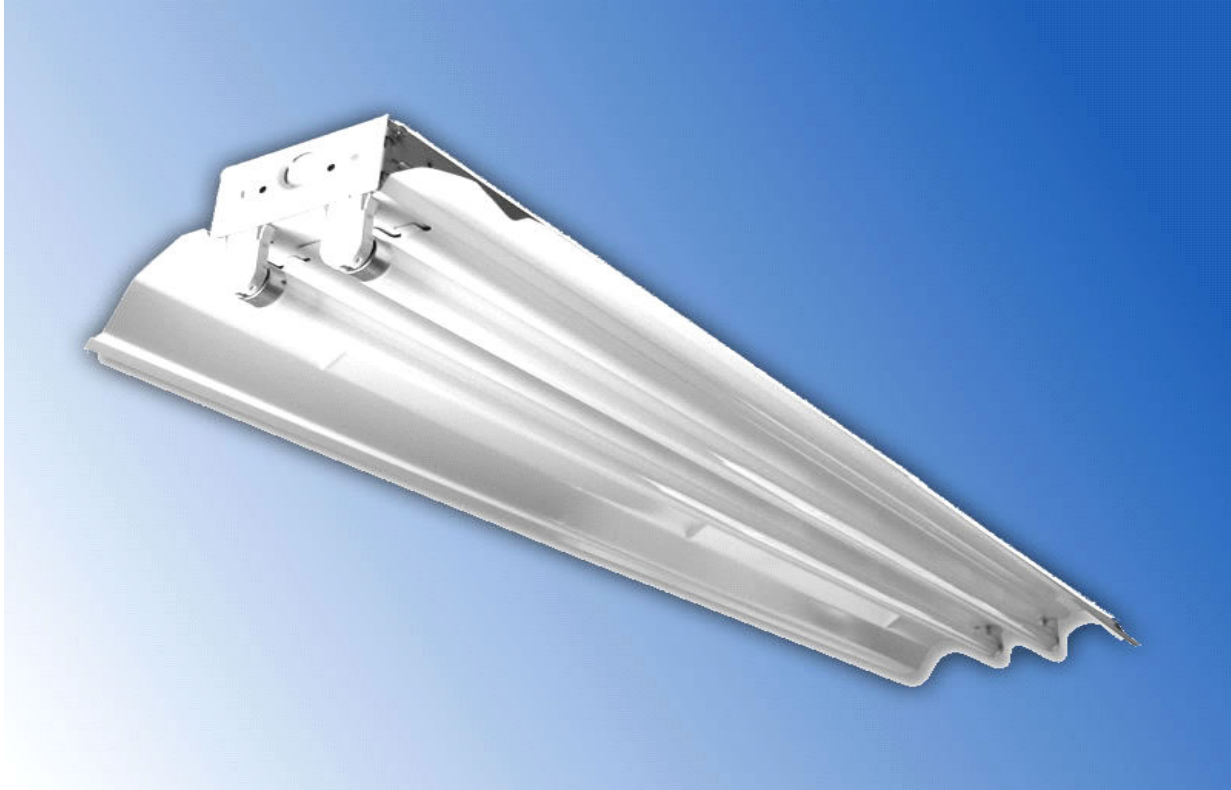




## INDUSTRIAL LIGHTING (Series IN) SLIMLINE 2 & 4 LIGHT



*Designed for Factories, Warehouses, Workshops, Garages & Utility Areas*



### **Options:**

Emergency Ballast  
Slotted Reflectors  
Wire Guards  
Alignment Clips  
Plug & Cords  
Switches  
V Hooks  
S Hooks  
Jack Chain  
Plastic Sleeves

### **Features:**

- **Housing** is heavy 23 gauge prime cold rolled steel.
- **Pre-painted** high-reflectance white housing.
- **Reflectors** are white roll formed for consistent alignment and rigidity.
- **Mounting** holes are provided for surface, chain, stem-mounted, V Hangers or air-craft cable.
- **Versatile End -Plates** doubles as coupler for continuous mounting.
- **Completely** wired and ready to hang.

**We carry replacement parts for all the fixtures we manufacture**

- **Available** in T5, T8, T12 (*but not all lengths*)

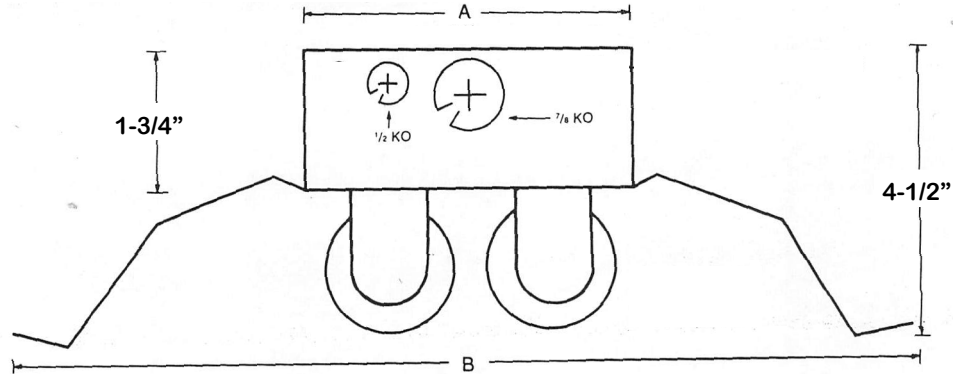
**E. B. LIGHTING & SUPPLIES, INC.**

1107 East Baltimore St., Baltimore MD 21202

410-276-7617

fax: 410-276-7307

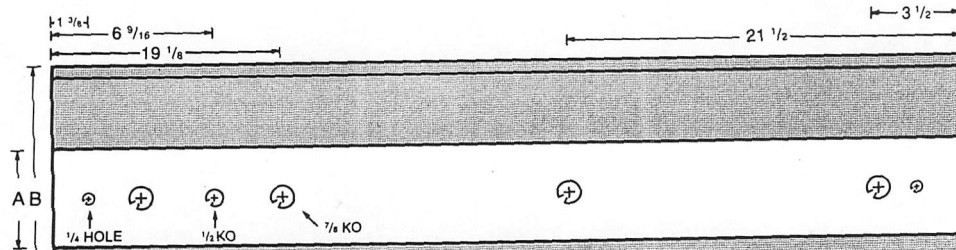
# INDUSTRIAL SLIMLINE DIMENSIONS



Dimensions May Vary

Fixture	A	B
2 LT	4-1/4"	12-3/4"
4 LT	8-3/4"	16-3/4"

### REAR VIEW



### BALLAST & LAMP DESCRIPTION:

IN	# LAMPS	WATTS & LAMPS	VOLTAGE	OPTIONS
□ / □ / □ / □	2 3 4	17, 25, 32, 59 — T8 28 & 54 — T5 40, 48, 72, 96 — T12	120 277 C-UNIV. 120-277	DIM- DIMMING BALLAST EMG- EMERGENCY BALLAST ISN - HIGH EFFICIENCY / NORMAL POWER ISH - HIGH EFFICIENCY / HIGH POWER ISL - HIGH EFFICIENCY / LOW POWER

ADD "T" FOR TANDEM



E.B. LIGHTING & SUPPLIES, INC.  
 1107 East Baltimore Street  
 Baltimore MD 21202  
 410-276-7617      fax: 410-276-7307