



LED CHANNEL STRIPS (Series LST) NARROW 18", 2', 3', 4', 6', 8'



Designed for Coves, Garages, Storage & Utility Areas, Workshops



LED STRIP
MODULES
AVAILABLE IN
DIFFERENT
LENGTHS, LUMENS,
WATTS & KELVIN

Options:

Step Dimming
Emergency Ballast
Wire Guards
Alignment Clips
Plug & Cords
V Hooks
S Hooks
Aircraft Cable
Jack Chain
Reflectors
Canopy Kit

Features:

- **Housing** is heavy 23 gauge prime cold rolled steel.
- **Pre-painted** high-reflectance white housing.
- **Mounting** holes are provided for surface, chain, stem-mounted, V Hangers or air-craft cable.
- **Versatile End –Plates** doubles as coupler for continuous mounting.
- **Completely** wired and ready to hang.
- **Available** in 15" to 96" lengths.
- Snap together design.

We carry replacement parts for all the fixtures we manufacture

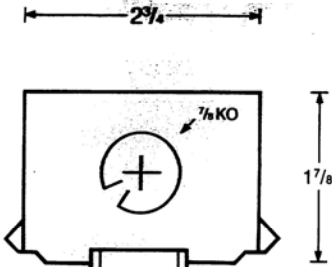
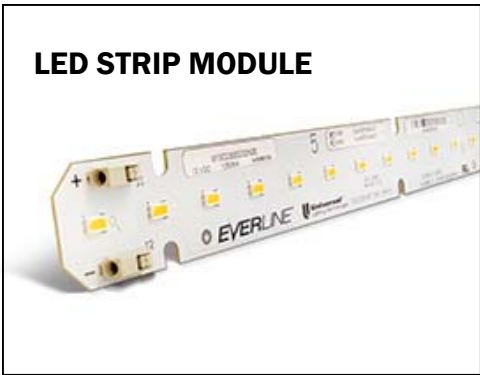
E. B. LIGHTING & SUPPLIES, INC.

1107 East Baltimore St., Baltimore MD 21202

410-276-7617

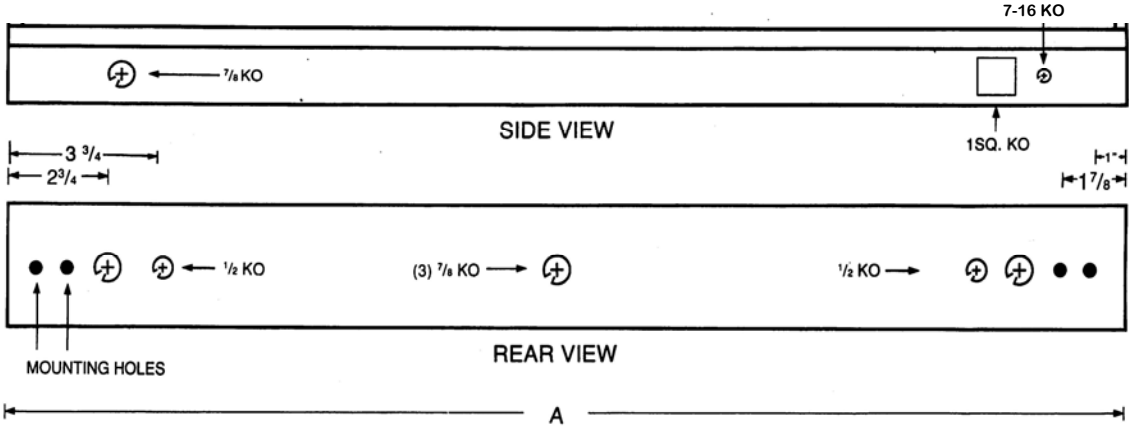
fax: 410-276-7307

ONE LIGHT STRIP DIMENSIONS



"A" LENGTHS
18"
24"
36"
48"
72"
96"

Dimensions May Vary



LED ST

ORDERING GUIDE:

--	--	--	--	--	--

SIZE	LUMEN/ WATTS	KELVIN	VOLTAGE	DIMMING	OPTIONS
18"	OPTIONS				
24"	2FT-1500/16	3000	C- 120-277v	BLANK- 10V	EMG-EMERGENCY
36" *	2FT-2100-21	3500	480-480v	IS STANDARD	BALLAST
48"	4FT-3100/33	4000			STEP-STEP DIMMING
72" *	4FT-3900/36	5000			WG-WIRE GUARDS
96"	4FT-5600/57				CAN-CANOPY KIT
* Call	4FT-9500/96				
For	TCH OPTIONS				
Spec	8FT-6200/66				
Info	8FT-7800/72				
	8FT-11200/114				
	8FT-19000/192				



E.B. LIGHTING & SUPPLIES, INC.
 1107 East Baltimore Street
 Baltimore MD 21202
 410-276-7617 fax: 410-276-7307
 Web: www.eb@eblights.com