



#74 LED VANITY BRACKET 2' & 4' (Series LED74)



Designed for Bathrooms, Kitchens, Vanities, Bars, Over Mirrors



Options:

Convenience
Receptacle
Continuous Row Bands
Other Body Finishes
White Lens
Frosted Lens

Features:

- **Attractive** decorative chrome fixture provides softly angled light.
- **High Impact**, durable ribbed acrylic lens.
- **Chrome** plated steel housing and end caps.
- **Optics** acrylic diffuser provides soft even, comfortable illumination.
- **Contour** bands available to provide continuous row mounting.
- **Knockouts** for all standard installation.
- **Completely** wired and ready to hang.

We carry replacement parts for all the fixtures we manufacture

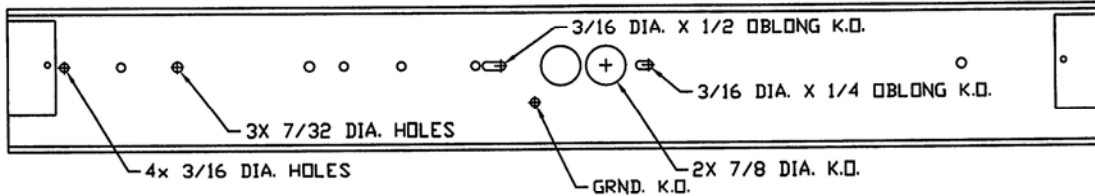
E. B. LIGHTING & SUPPLIES, INC.

1107 East Baltimore St., Baltimore MD 21202

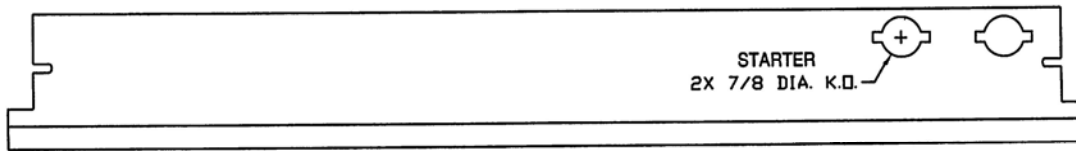
410-276-7617

fax: 410-276-7307

LED #74 WALL BRACKET DIMENSIONS

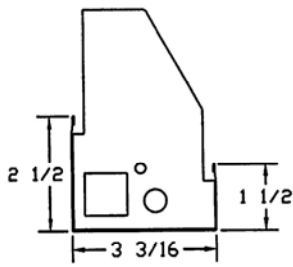


**TOP
W/O DIFFUSER**

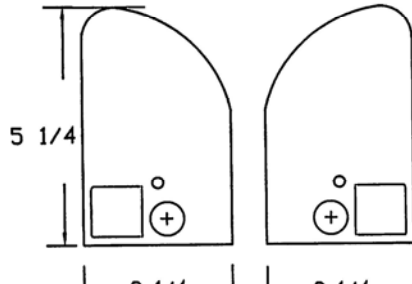


COVER

END PLATE

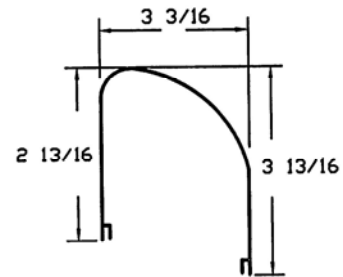


END W/O PLATE



LEFT END PLATE

RIGHT END PLATE

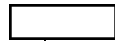


DIFFUSER

Dimensions Subject to Change

ORDERING:

LED74



2 FT

1800/19
2300/24
3700/38

4 FT

2300/24
4600/49
6500'65
7400/76



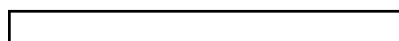
KELVIN

3000
3500
4000
5000



VOTAGE

C- 120-277v
480-480v



OPTIONS

EMG-EMERGENCY BACKUP
WHT-WHITE LENS
FROST-FROSTED LENS
JOIN-JOINING BANDS
DIV-DIVIDERS

**ALL OPTIONS
CAN BE
MODIFIED
TO CUSTOM
BUILD TO
YOUR SPECS**

DIMMING

BLANK-10V IS STANDARD
STEP-STEP DIMMING



E.B. LIGHTING & SUPPLIES, INC.

1107 East Baltimore Street
Baltimore MD 21202

410-276-7617

fax: 410-276-7307

www.eblights.com

email: eblights@eblights