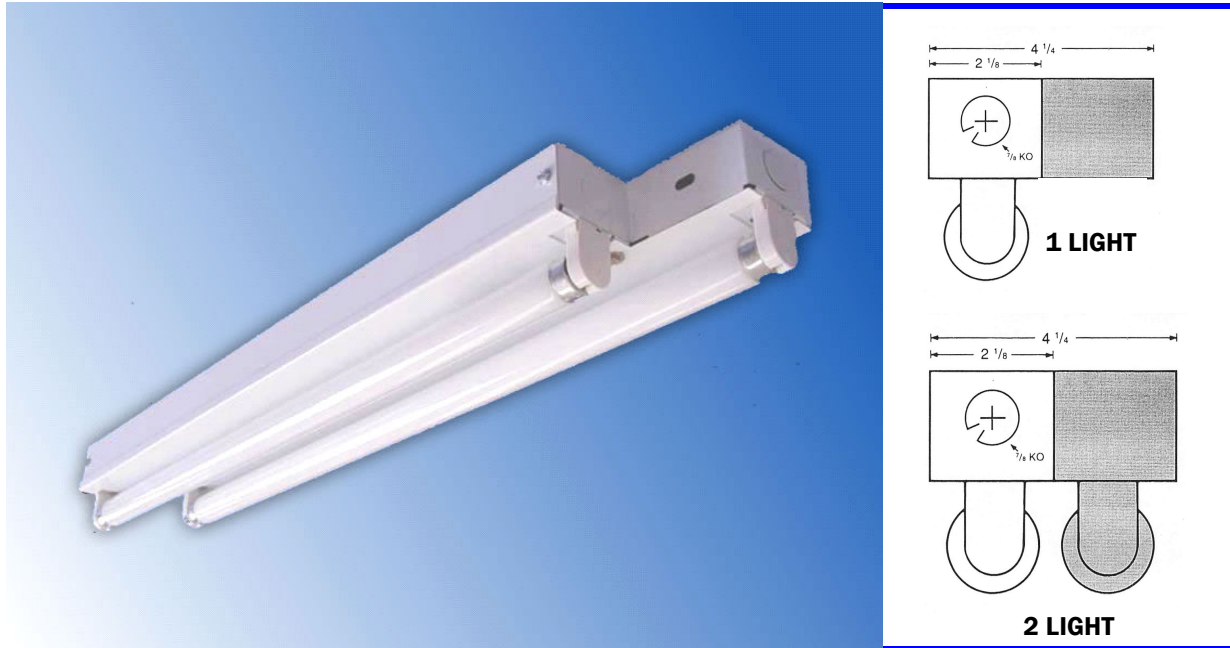




## STAGGED STRIPS (Series SS) ONE or TWO LAMPS



*Designed for Coves, Valances, Displays, Indirect Lighting*



### **Options:**

Emergency Ballast  
Dimming Ballast  
Lamp Locks  
Pull Chain Switch

### **Features:**

- **Offset** design on staggered channel body gives a continuous band of illumination without socket and shadows for dark spots.
- **Housing** is heavy gauge prime cold rolled steel with high reflectance baked white enamel finish.
- **Mount** in continuous rows.
- **1 or 2** lamp configuration.
- **T5, T8 or T12 Lamps.**

**We carry replacement parts for all the fixtures we manufacture**

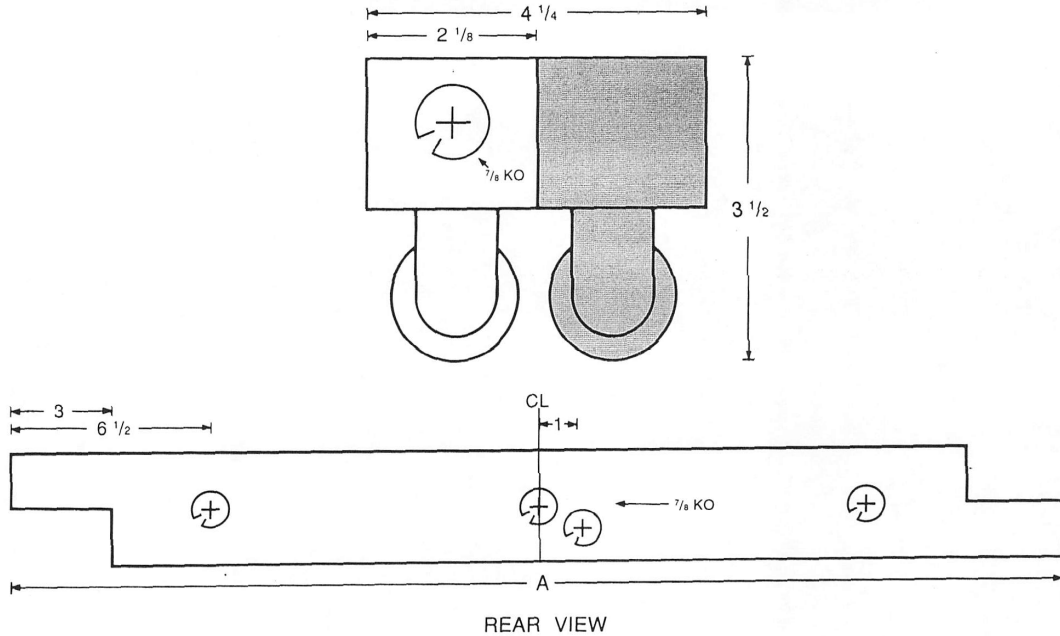
**E. B. LIGHTING & SUPPLIES, INC.**

1107 East Baltimore St., Baltimore MD 21202

410-276-7617

fax: 410-276-7307

# STAGGED STRIP DIMENSIONS



**AVAILABLE IN  
TANDEM BODY  
99" LONG**

"A" DIMENSION:	
18"	20- 15/16"
2 FT.	26-15/16"
3 FT.	38-15/16"
4 FT.	50-15/16"

Dimensions May Vary

**BALLAST & LAMP DESCRIPTION:**

SS	# LAMPS	WATTS & LAMPS	VOLTAGE	OPTIONS
□ / □ / □ / □	1 2	17, 25, 32, — T8 14, 21, 28 & 54 — T5 15, 20, 30, 40 — T12	120 277 C-UNIV. 120-277	DIM- DIMMING BALLAST 2BAL- 2 BALLAST EMG- EMERGENCY BALLAST ISN - HIGH EFFICIENCY / NORM ISH - HIGH EFFICIENCY / HIGH ISL - HIGH EFFICIENCY / LOW



**E.B. LIGHTING & SUPPLIES, INC.**  
 1107 East Baltimore Street  
 Baltimore MD 21202  
 410-276-7617      fax: 410-276-7307