



SURFACE CELLS (SC Series) 1x2' 1x4' 2x2' and 2x4'



Designed for Schools, Stores, Office, Rec Rooms, Corridors, Nursing Homes



Options:

Emergency Ballast
Dimming Ballast
Stems & Canopy
Lamp available in
different colors
Multi-level switching
Radio-interference
filter (120-277V)
8,9,16,18 or 32 cells

Features:

- **Construction:** Spot-welded for rigidity and clean appearance. Ballast cover snaps into place to eliminate the need for tools when accessing the ballast. Diffuser is held within hinged frame door. Metal to metal design of the door eliminates most light leaks.
- **Mounting:** knock-outs provided for stem mounting.
- **Finish:** Powder painted white visible surfaces.
- **Optics:** 8,9,16,18 OR 32 cells
- **Electrical:** Standard voltage is 120-277V, 60 Hz. Standard ballasts are electro-magnetic, and energy saving. Optional ballast are available.

We carry replacement parts for all the fixtures we manufacture

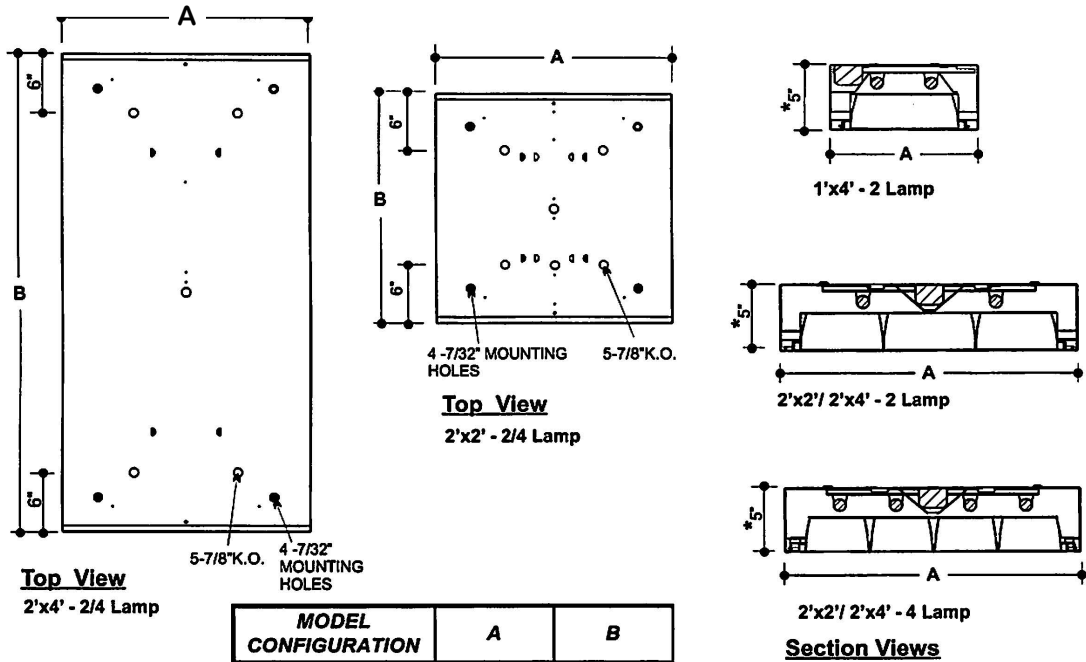
E. B. LIGHTING & SUPPLIES, INC.

1107 East Baltimore St., Baltimore MD 21202

410-276-7817

fax: 410-276-7307

SURFACE DEEP CELL DIMENSIONS



MODEL CONFIGURATION	A	B
1'x4'	12"	48"
2'x2'	24"	24"
2'x4'	24"	48"

ORDERING INFORMATION

S	C	/	/	/	/	/	/
#CELLS	SIZE	#LAMPS	LAMP	LAMP	#BALLAST	VOLTS	OPTIONS
9 CELL	2X2	1,2,3,4	17- 2' T8	TYPE	-	120 - 120V	EM - EMERGENCY BALLAST
16 CELL			20- 2' T12	U 3	2 - 2	277 - 277V	DIM- DIMMING BALLAST
8 CELL	1X4		28- 4' T5	PLL		480 - 480V	
			31- 2' U3 T8	U6		C - 120-277V	
12 CELL			31- 2' U6 T8	T8			
18 CELL	2X4		32- 4' T8	T5			
24 CELL			40- 4' T12	T12			
32 CELL			40- BIAX				
			50- BIAX				
			54- 4' T5 H0				

Other sizes and combination are available
Dimensions may vary.



E.B. LIGHTING & SUPPLIES, INC.
 1107 East Baltimore Street
 Baltimore MD 21202
 410-276-7617 fax: 410-276-7307