



**#22 WALL PUFF (22 Series)  
2', 3' or 4' FIXTURES**



*Designed for Bathrooms, Fitting Rooms, Vanities, Stairwells, Utility Areas*



**Options:**

Dimming Ballast  
Emergency Backup  
Multi-level switching

***Features:***

- **Decorative** white acrylic wrap-around (puff) diffuser.
- **Contoured** sides provide a cloud like floating profile.
- **Steel** housing with white enamel finish.
- **Fixture** individually boxed.
- **Available** as 1 or 2 lamp fixtures.
- **Completely** wired and ready to hang.

**We carry replacement parts for all the fixtures we manufacture**

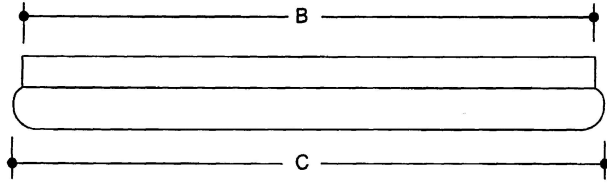
**E. B. LIGHTING & SUPPLIES, INC.**

1107 East Baltimore St., Baltimore MD 21202

410-276-7617

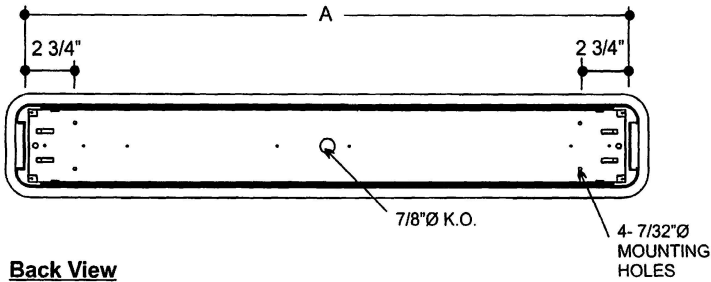
fax: 410-276-7307

# #22 WALL PUFF DIMENSIONS

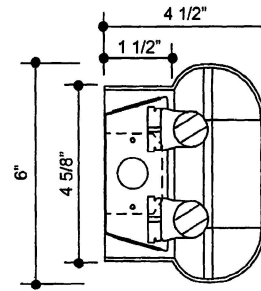


Top View

MODEL	Opening (In.) A	Length (In.) B	Overall Length (In.) C
2'	24 1/4	25 1/2	26 3/4
3'	36 1/4	37 1/2	38 3/4
4'	48 1/4	49 1/2	50 3/4



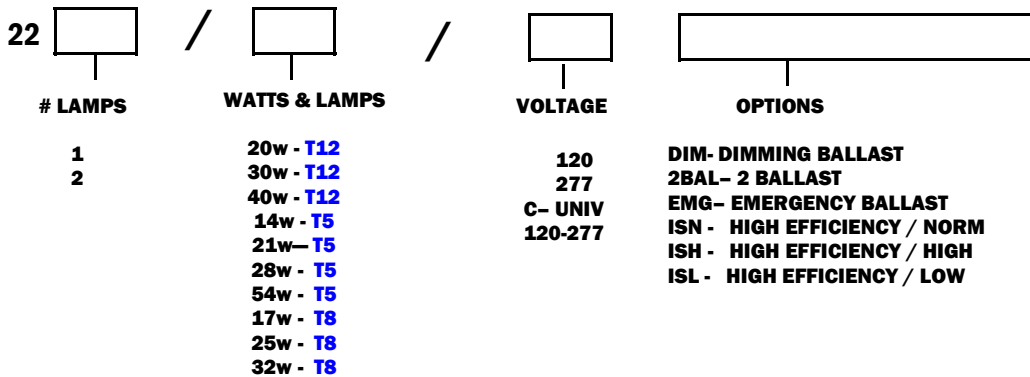
Back View



Cross Section

Dimensions May Vary

**ORDERING:**



**E.B. LIGHTING & SUPPLIES, INC.**

1107 East Baltimore Street  
Baltimore MD 21202

410-276-7617

fax: 410-276-7307