

# BLCsLED Series 2', 3', 4' & 8' Covered Strips



|            |  |
|------------|--|
| Project:   |  |
| Type:      |  |
| Catalog #: |  |



## STANDARD



The BLCsLED series is a group of 2', 3', 4', and 8' covered strip lights, which are designed as direct replacements for fluorescent strips. The BLCsLED series is designed to deliver general ambient lighting in a variety of indoor settings, including schools, offices, hospitals and stores, and is the perfect choice for both new construction and retrofits. This high-efficacy luminaire provides long-life and uniform illumination, as well as standard 0-10vdc dimming capability.

## FEATURES

- Available in 3500k (warm/neutral white), 4000k (neutral white) and 5000k (cool white) color temperatures.\*
- Long-life LEDs provide 122,000 hours of operation with at least 70% of initial lumen output ( $L_{70}$ ).\*\*
- BLCsLED2FT provides 2,348 luminaire lumens (117 lumens per watt, LPW) at 3500k; 2,600 luminaire lumens (130 LPW) at 4000k; and 2,432 luminaire lumens (122 LPW) at 5000k.\*
- BLCsLED3FT provides 3,129 luminaire lumens (125 LPW) at 3500k; 3,250 luminaire lumens (130 LPW) at 4000k; and 3,334 luminaire lumens (133 LPW) at 5000k.\*
- BLCsLED4FT provides 3,811 luminaire lumens (119 LPW) at 3500k; 4,224 luminaire lumens (132 LPW) at 4000k; and 4,256 luminaire lumens (133 LPW) at 5000k.\*
- BLCsLED8FT provides 8,450 luminaire lumens (130 LPW) at 3500k; 8,580 luminaire lumens (132 LPW) at 4000k; and 8,645 luminaire lumens (133 LPW) at 5000k.\*
- Uniform illumination with no visible LED pixelation.
- Universal 120-277 AC voltage (50-60Hz) is standard.
- 0-10vdc dimming capability is standard.
- Power factor > 0.90.
- Total harmonic distortion < 20%.
- Color rendering index > 80.
- Steel housing and acrylic lens.
- Easy installation in new construction or retrofit.

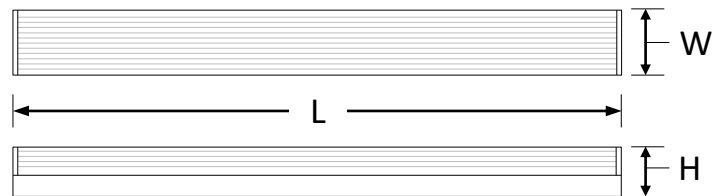
\* Contact factory for other color temperatures and lumen packages.

\*\*  $L_{70}$  hours are IES TM21-11 calculated hours.

## WARRANTY & LISTINGS

- cULus approved for damp locations (-20° C to 50° C / -4° F to 122° F).
- DLC premium approved.
- Complies with FCC Part 15, Class A.
- Complies with IEEE C.62.41-1991, Class A input transient surge protection (2.5kV).
- Complies with IEC 61000-4-2 level 2 (4kV) electrostatic discharge (ESD).
- Complies with RoHS (Restriction on Hazardous Substances) requirements.
- 5-year warranty of all electronics and housing.

## DIMENSIONS



|                      | BLCsLED2FT | BLCsLED3FT | BLCsLED4FT | BLCsLED8FT |
|----------------------|------------|------------|------------|------------|
| <b>Length – L</b>    | 26"        | 37"        | 48"        | 96"        |
| <b>Width – W</b>     | 3 3/8"     | 3 3/8"     | 3 3/8"     | 3 3/8"     |
| <b>Height – H</b>    | 3 1/2"     | 3 1/2"     | 3 1/2"     | 3 1/2"     |
| <b>Weight (lbs.)</b> | 4.1        | 5.1        | 6.2        | 13.8       |

## ORDERING INFORMATION

Example: BLCsLED2FT-20W-35KMV-ET + BLCsLED2FT-WG-ET

| Model                  | Color Temperature | Luminaire Lumens | Luminaire Watts | Lumens / Watt | Options (Order Separately)             |
|------------------------|-------------------|------------------|-----------------|---------------|--|
| BLCsLED2FT-20-35KMV-ET | 3500k             | 2,348            | 20              | 117           | BLCsLED2FT-WG-ET = Wire Guard (2 Foot) |
| BLCsLED2FT-20-4KMV-ET  | 4000k             | 2,600            | 20              | 130           |  |
| BLCsLED2FT-20-5KMV-ET  | 5000k             | 2,432            | 20              | 122           |  |
| BLCsLED3FT-25-35KMV-ET | 3500k             | 3,129            | 25              | 125           | BLCsLED3FT-WG-ET = Wire Guard (3 Foot) |
| BLCsLED3FT-25-4KMV-ET  | 4000k             | 3,250            | 25              | 130           |  |
| BLCsLED3FT-25-5KMV-ET  | 5000k             | 3,334            | 25              | 133           |  |
| BLCsLED4FT-32-35KMV-ET | 3500k             | 3,811            | 32              | 119           | BLCsLED4FT-WG-ET = Wire Guard (4 Foot) |
| BLCsLED4FT-32-4KMV-ET  | 4000k             | 4,224            | 32              | 132           |  |
| BLCsLED4FT-32-5KMV-ET  | 5000k             | 4,256            | 32              | 133           |  |
| BLCsLED8FT-65-35KMV-ET | 3500k             | 8,450            | 65              | 130           |  |
| BLCsLED8FT-65-4KMV-ET  | 4000k             | 8,580            | 65              | 132           |  |
| BLCsLED8FT-65-5KMV-ET  | 5000k             | 8,645            | 65              | 133           |  |

# BLCSLED Series 2', 3', 4' & 8' Covered Strips



## ELECTRICAL

| Model                  | Color Temp. | CRI <sup>1</sup> | Luminaire Lumens | Luminaire Watts | Lumens Per Watt | Input Voltage <sup>2</sup> | Input Current (A) |      |      | Power Factor | THD <sup>3</sup> | L <sub>70</sub> Hours <sup>4</sup> |
|------------------------|-------------|------------------|------------------|-----------------|-----------------|----------------------------|-------------------|------|------|--------------|------------------|------------------------------------|
|                        |             |                  |                  |                 |                 |                            | 120V              | 240V | 277V |              |                  |                                    |
| BLCSLED2FT-20-35KMV-ET | 3500k       | > 80             | 2,348            | 20              | 117             | 120-277                    | 0.16              | 0.08 | 0.07 | > 90%        | < 20%            | 122,000                            |
| BLCSLED2FT-20-4KMV-ET  | 4000k       | > 80             | 2,600            | 20              | 130             | 120-277                    | 0.17              | 0.08 | 0.07 | > 90%        | < 20%            | 122,000                            |
| BLCSLED2FT-20-5KMV-ET  | 5000k       | > 80             | 2,432            | 20              | 122             | 120-277                    | 0.16              | 0.08 | 0.07 | > 90%        | < 20%            | 122,000                            |
| BLCSLED3FT-25-35KMV-ET | 3500k       | > 80             | 3,129            | 25              | 125             | 120-277                    | 0.21              | 0.10 | 0.09 | > 90%        | < 20%            | 122,000                            |
| BLCSLED3FT-25-4KMV-ET  | 4000k       | > 80             | 3,250            | 25              | 130             | 120-277                    | 0.21              | 0.10 | 0.09 | > 90%        | < 20%            | 122,000                            |
| BLCSLED3FT-25-5KMV-ET  | 5000k       | > 80             | 3,334            | 25              | 133             | 120-277                    | 0.21              | 0.10 | 0.09 | > 90%        | < 20%            | 122,000                            |
| BLCSLED4FT-32-35KMV-ET | 3500k       | > 80             | 3,811            | 32              | 119             | 120-277                    | 0.25              | 0.13 | 0.11 | > 90%        | < 20%            | 122,000                            |
| BLCSLED4FT-32-4KMV-ET  | 4000k       | > 80             | 4,224            | 32              | 132             | 120-277                    | 0.25              | 0.13 | 0.11 | > 90%        | < 20%            | 122,000                            |
| BLCSLED4FT-32-5KMV-ET  | 5000k       | > 80             | 4,256            | 32              | 133             | 120-277                    | 0.25              | 0.13 | 0.11 | > 90%        | < 20%            | 122,000                            |
| BLCSLED8FT-65-35KMV-ET | 3500k       | > 80             | 8,450            | 65              | 130             | 120-277                    | 0.54              | 0.27 | 0.23 | > 90%        | < 20%            | 122,000                            |
| BLCSLED8FT-65-4KMV-ET  | 4000k       | > 80             | 8,580            | 65              | 132             | 120-277                    | 0.54              | 0.27 | 0.23 | > 90%        | < 20%            | 122,000                            |
| BLCSLED8FT-65-5KMV-ET  | 5000k       | > 80             | 8,645            | 65              | 133             | 120-277                    | 0.54              | 0.27 | 0.23 | > 90%        | < 20%            | 122,000                            |

<sup>1</sup> Color rendering index.

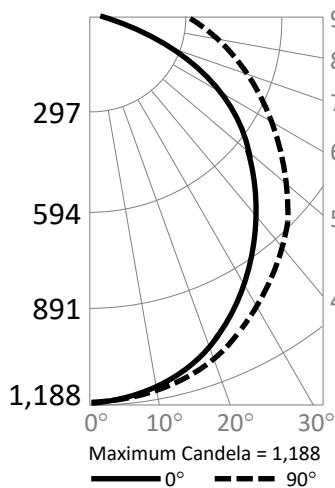
<sup>2</sup> All 50-60Hz.

<sup>3</sup> Total harmonic distortion.

<sup>4</sup> L<sub>70</sub> refers to the number of hours at which lumen output declines to 70% of the initial level. L<sub>70</sub> hours are IES TM21-11 calculated hours.

## PHOTOMETRIC DATA

Model: **BLCSLED4FT-32-5KMV-ET (4,256 lumens)**



### Candlepower Summary

|     | 0°    | 90°   |
|-----|-------|-------|
| 0°  | 1,188 | 1,188 |
| 10° | 1,154 | 1,169 |
| 20° | 1,064 | 1,112 |
| 30° | 926   | 1,027 |
| 40° | 758   | 921   |
| 50° | 574   | 794   |
| 60° | 391   | 667   |
| 70° | 216   | 540   |
| 80° | 70    | 427   |
| 90° | 5     | 328   |

### Zonal Lumen Summary

| Zone       | Lumens | % Fixture |
|------------|--------|-----------|
| 0° – 10°   | 127    | 3.0%      |
| 0° – 20°   | 490    | 11.5%     |
| 0° – 30°   | 1,035  | 24.3%     |
| 0° – 40°   | 1,689  | 39.7%     |
| 0° – 50°   | 2,370  | 55.7%     |
| 0° – 60°   | 3,004  | 70.6%     |
| 0° – 70°   | 3,541  | 83.2%     |
| 0° – 80°   | 3,957  | 93.0%     |
| 0° – 90°   | 4,256  | 100.0%    |
| 90° – 180° | 0      | 0%        |
| 0° – 180°  | 4,256  | 100.0%    |

### Cone of Light

